

"WMI"

Parts List
(ILLUSTRATED)

MODEL

"WMI"

•

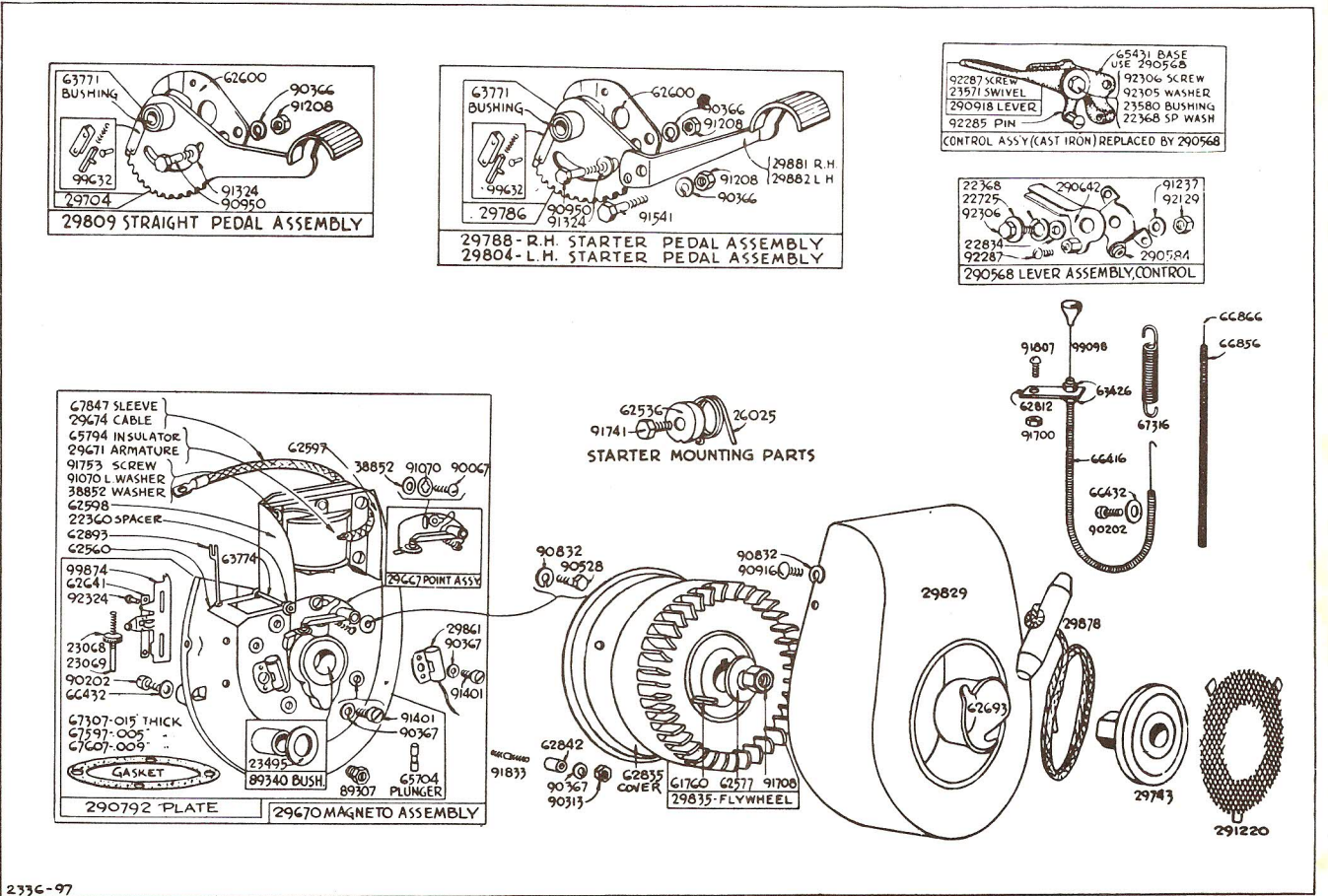
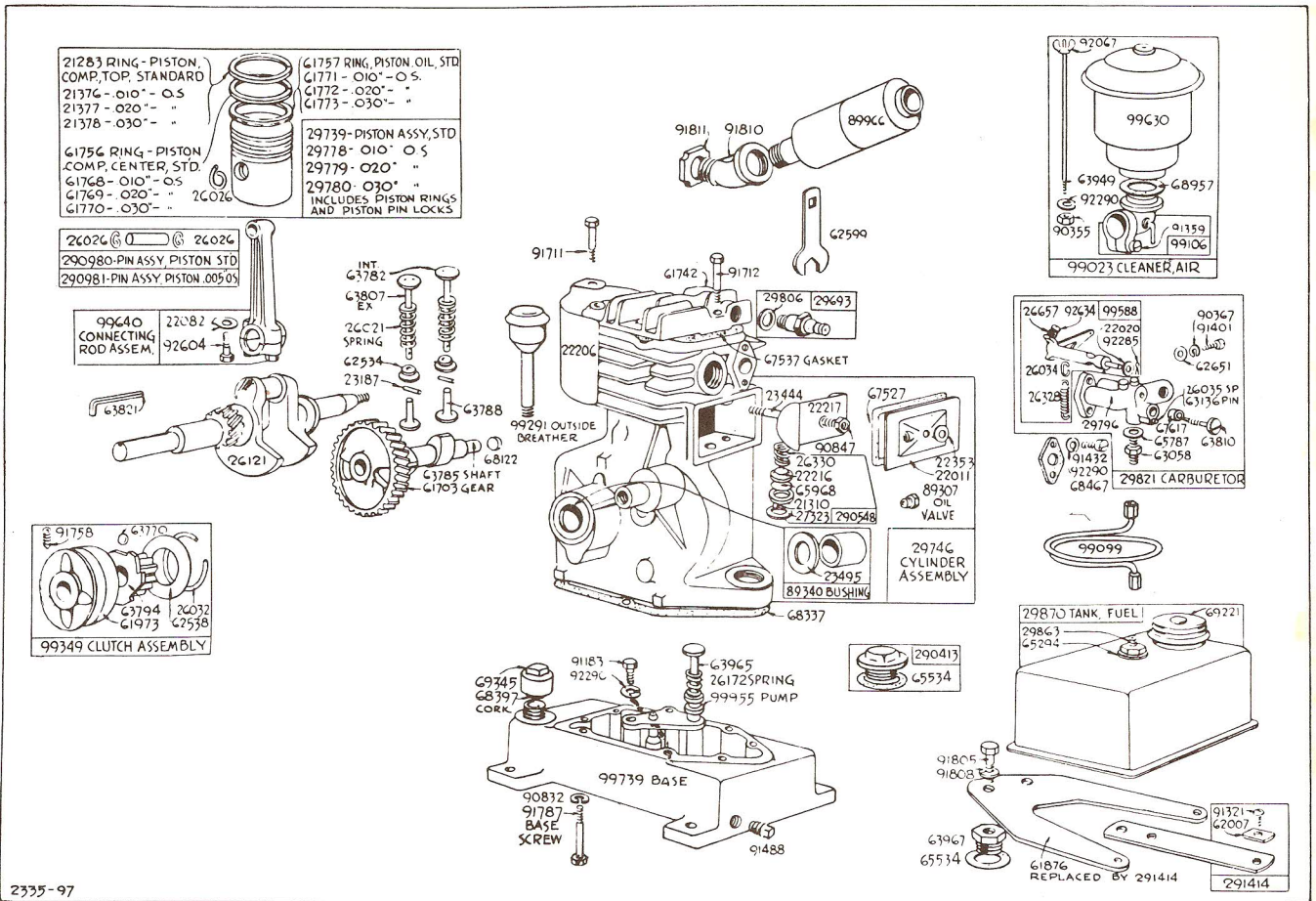
NOTICE

**FILE IN SECTION 2 OF YOUR ENGINE
SERVICE MANUAL.**

**REMOVE AND DESTROY PRESENT
MODEL "WMI" PARTS LIST (Form MS-1707)
FROM SECTION 2 OF MANUAL.**

•





Assemblies include all parts shown in brackets

TO FIND THE CORRECT NUMBER OF THE PART YOU NEED

1. Make a note of your motor TYPE NUMBER (Not the Serial Number) that appears on the metal nameplate attached to motor blower housing.
2. Refer to pages illustrating parts and locate the Master Part Number by comparing your old part with the illustrations. Assemblies include all part numbers bracketed in illustrations. All parts shown in assembly brackets on which part numbers are given can be purchased separately.
3. After the Master Part Number has been identified, refer to the following Parts Lists where these Master Part Numbers are listed in numerical order.
The Master Part is used on all types of motors except those types listed under "Note."
4. If a "Note" appears below the Master Part Number, this means that this part is made different from the Master Part for certain types and if your type is listed under "Note," order the part referred to.
5. If two or more parts are bracketed (——) under "note," they are used to replace the master part on the type numbers shown.
6. If your Motor Type Number does not appear after any part number listed under "Note," order the Master Part Number.
7. When ordering parts — or writing for service information — always specify the MODEL LETTER — TYPE NUMBER — and SERIAL NUMBER of your motor.

Model "WMI" Parts List INDUSTRIAL TYPE MOTOR

MASTER PART NUMBER	NAME	MASTER PART NUMBER	NAME
21283	Ring—Piston, Compression, Top—Standard	26657	Spring—Throttle Adjustment
21310	Body—Breather Used on engines with Inside Breather.	27323	Gasket—Breather
21376	Ring—Piston, Compression, Top—.010" O.S.	29667	Point Assembly—Contact
21377	Ring—Piston, Compression, Top—.020" O.S.	29670	Magneto Assembly Note: No. 290895 Magneto Assembly Used on type Nos. 95124, 95205. Includes: No. 65335 Wire—Ground
21378	Ring—Piston, Compression, Top—.030" O.S.	29671	Armature—Magneto
22011	Cover—Valve	29674	Cable—Ignition
22020	Washer—Throttle Shaft	29693	Plug—Spark (with Gasket)
22082	Lock—Connecting Rod Screw Note: No. 90832 Lockwasher— $\frac{1}{4} \times \frac{3}{32} \times \frac{3}{4}$ " Used on earlier model engines.	29704	Pedal—Foot Starter—Straight
22206	Shield—Cylinder	29739	Piston Assembly—Standard
22216	Cover—Breather Used on engines with Inside Breather.	29743	Pulley—2 $\frac{3}{8}$ " Dia. Note: No. 29913 Pulley—1 $\frac{5}{8}$ " Dia. Used on type Nos. 20779, 20796. No. 63991 Pulley—2" Dia. Used on type Nos. 20776, 20847, 95275. No. 99079 Pulley—2 $\frac{3}{8}$ " Dia. Used on type No. 20488.
22217	Shield—Oil Spray Used on engines with Inside Breather. Note: No. 62703 Shield—Oil Spray Used on engines with Outside Breather.	29746	Cylinder Note: No. 99090 Cylinder Used on type Nos. 20488, 20489, 20761, 20762, 20847.
22353	Washer—Valve Cover	29778	Piston Assembly—.010" O.S.
22360	Spacer—Governor Blade	29779	Piston Assembly—.020" O.S.
22368	Washer—Control Lever	29780	Piston Assembly—.030" O.S.
22725	Washer—Control Lever	29786	Sector Assembly—Starter
22834	Washer—Spacer	29788	Starter Assembly—Foot—3 $\frac{1}{2}$ " R.H. Offset
23068	Nut—Speed Adjusting	29796	Body—Carburetor
23069	Screw—Speed Adjusting	29804	Starter Assembly—Foot—3 $\frac{1}{8}$ " L.H. Offset Note: No. 29920 Starter Assembly—Foot—3 $\frac{1}{2}$ " L.H. Offset Used on type No. 20472. No. 99104 Starter Assembly—Foot—1 $\frac{1}{4}$ " L.H. Offset Used on type Nos. 20460, 20763.
23187	Pin—Valve Spring Retainer	29806	Gasket—Spark Plug
23444	Stud—Valve Cover Used on engines with Inside Breather. Note: No. 91707 Screw—Valve Cover Used on engines with Outside Breather.	29809	Starter Assembly—Foot—Straight
23495	Washer—Oil Retainer	29821	Carburetor Assembly
23571	Swivel—Control Lever	29829	Housing—Blower
23580	Bushing—Control Lever	29835	Flywheel—Magneto
26021	Spring—Valve	29861	Condenser
26025	Spring—Pedal Return	29863	Outlet Assembly—Fuel Tank
26026	Lock—Piston Pin	29870	Tank Assembly—Fuel
26032	Spring—Clutch Retainer	29878	Rope—Starter
26034	Link—Throttle	29881	Pedal—Foot Starter—3 $\frac{1}{2}$ " R.H. Offset
26035	Spring—Needle Valve Stop Pin	29882	Pedal—Foot Starter—3 $\frac{1}{8}$ " L.H. Offset Note: No. 29921 Pedal—Foot Starter—3 $\frac{1}{2}$ " L.H. Offset Used on type No. 20472. No. 99103 Starter Pedal—Foot—1 $\frac{1}{4}$ " L.H. Offset Used on type Nos. 20460, 20763.
26121	Crankshaft Note: No. 26012 Crankshaft Used on engines before Serial No. 196741. No. 26135 Crankshaft Used on type Nos. 95052, 95201.		
26172	Spring—Oil Pump Plunger		
26328	Spring—Throttle		
26330	Spring—Breather Used on engines with Inside Breather.		

MASTER PART NUMBER	NAME
38852	Washer—Armature
61703	Gear—Cam
61742	Head—Cylinder
61756	Ring—Piston, Compression, Center—Standard
61757	Ring—Piston, Oil—Standard
61760	Key—Flywheel
61768	Ring—Piston, Compression, Center—.010" O.S.
61769	Ring—Piston, Compression, Center—.020" O.S.
61770	Ring—Piston, Compression, Center—.030" O.S.
61771	Ring—Piston, Oil—.010" O.S.
61772	Ring—Piston, Oil—.020" O.S.
61773	Ring—Piston, Oil—.030" O.S.
61876	Bracket (Replaced by 291414 Bracket) Note: No. 61881 Bracket—Fuel Tank Used on type Nos. 20772, 20776, 20829, 20981, 95124, 95130.
61973	Housing—Starter Clutch Note: No. 61700 Housing—Starter Clutch Used on type Nos. 20453, 20456, 20479, 20480, 20761, 95125. No. 61781 Housing—Starter Clutch Used on type Nos. 20492, 20780, 20782, 20787, 95053. No. 61937 Housing—Starter Clutch Used on type No. 20979.
62007	Clamp—Fuel Tank
62534	Retainer—Valve Spring
62536	Cup—Starter Return Spring
62538	Washer—Clutch Retainer
62560	Blade—Governor
62577	Washer—Flywheel
62597	Plate—Baffle (Right Hand)
62598	Plate—Baffle (Left Hand)
62599	Wrench—Spark Plug
62600	Stop—Starter Pedal
62641	Plate—Speed Adjuster
62651	Washer—Carburetor
62693	Pulley—Rope Starter
62812	Bracket—Control Wire Casing
62835	Cover—Dust Note: No. 62655 Cover—Dust Used on engines before Serial No. 162275.
62842	Spacer—Dust Cover Note: { No. 63828 Stud—Magneto Plate No. 90367 Lockwasher—No. 8x ⁵ / ₁₆ x ¹ / ₃₂ " No. 91401 Screw—Machine, Fill. Hd.—8-32x ¹ / ₄ " Used on engines before Serial No. 162275.
62893	Link—Governor
63058	Connector—Fuel Pipe
63136	Pin—Needle Valve Stop
63426	Locknut—Control Casing
63770	Ball—Clutch
63771	Bushing—Starter Sector
63774	Shaft—Governor Blade
63782	Valve—Intake
63785	Shaft—Cam
63788	Tappet—Valve
63794	Pinion—Starter Clutch
63807	Valve—Exhaust
63810	Valve—Needle
63821	Wrench— ⁵ / ₁₆ " Socket Head Set Screw
63949	Stud—Air Cleaner
63965	Plunger—Oil Pump
63967	Plug—Tank Bracket
65294	Washer—Fuel Tank Outlet
65534	Gasket—Oil Filler Cap
65704	Plunger—Contact Point
65787	Gasket—Fuel Pipe Connector
65794	Insulator—Armature
65968	Disc—Breather Used on engines with Inside Breather.

MASTER PART NUMBER	NAME
66416	Control Wire—9 ³ / ₄ " Long Note: If a longer casing is needed specify length in inches; if a shorter casing is needed Order No. 66416 and cut to required length.
66432	Washer—Control Wire Casing
66856	Casing—Control Wire—47" Long Note: If a longer casing is needed specify length in inches; if a shorter wire is needed order No. 66856 and cut to required length.
66866	Wire—Control—50" Long Note: If a longer wire is needed specify length in inches; if a shorter wire is needed Order No. 66866 and cut to required length.
67307	Gasket—Magneto Plate—.015" Thick
67316	Spring—Governor Control
67527	Gasket—Valve Cover
67537	Gasket—Cylinder Head
67597	Gasket—Magneto Plate—.005" Thick
67607	Gasket—Magneto Plate—.009" Thick
67617	Packing—Needle Valve
67847	Sleeve—Ignition Cable
68122	Plug—Cam Shaft
68337	Gasket—Engine Base
68397	Cork
68467	Gasket—Carburetor Mounting
68957	Gasket—Air Cleaner Mounting
69221	Cap—Fuel Tank
69345	Cap—Oil Filler
89307	Valve—Oil Return
89340	Bushing—Cylinder or Magneto Includes: No. 23495 Washer—Oil Retainer
89966	Muffler
90067	Screw—Machine, Rd. Hd.—8-32x ⁵ / ₁₆ "
90202	Screw—Machine, Fill. Hd.—10-32x ¹ / ₂ "
90313	Nut—Hex. 8-32
90355	Nut—Hex. 10-32
90366	Lockwasher— ⁵ / ₁₆ x ¹ / ₈ x ¹ / ₁₆ "
90367	Lockwasher—No. 8x ⁵ / ₁₆ x ¹ / ₃₂ "
90528	Screw—Cap, Hex. Hd.— ¹ / ₄ -28x ³ / ₄ "
90832	Lockwasher— ¹ / ₄ x ³ / ₃₂ x ⁵ / ₁₆ "
90847	Nut—Hex.— ¹ / ₄ -28 Used on engines with Inside Breather. Note: No. 91707 Screw—Valve Cover Used on engines with Outside Breather.
90916	Screw—Machine, Rd. Hd.— ¹ / ₄ -20x ¹ / ₂ "
90950	Screw—Cap, Hex. Hd.— ⁵ / ₁₆ -24x ³ / ₄ "
91070	Lockwasher—Shakeproof No. 1208
91183	Screw—Machine, Hex. Hd.— ¹ / ₄ -20x ³ / ₈ "
91208	Nut—Hex.— ⁵ / ₁₆ -24
91237	Lockwasher— ¹ / ₄ x ³ / ₃₂ x ³ / ₁₆ "
91321	Screw—Machine, Rd. Hd.— ¹ / ₄ -20x ³ / ₈ "
91324	Washer— ¹ / ₄ "—Standard
91359	Screw—Machine, Fill. Hd.—10-32x ³ / ₄ "
91401	Screw—Machine, Fill. Hd.—8-32x ¹ / ₄ "
91432	Screw—Machine, Fill. Hd.—10-32x ⁷ / ₈ "
91488	Plug—Pipe— ¹ / ₈ " Sq. Hd.
91541	Screw—Cap, Hex. Hd.— ⁵ / ₁₆ -24x ⁷ / ₈ "
91700	Nut—Hex.— ¹ / ₄ -20
91708	Nut—Flywheel
91711	Screw—Cylinder Head (Short)
91712	Screw—Cylinder Head (Long)
91741	Screw—Pedal Return Spring Cup
91753	Screw—Machine, Fill. Hd.—8-32x1"
91758	Screw Set, Socket Hd.— ⁵ / ₁₆ -24x ¹ / ₂ "
91787	Screw—Cap Hex. Hd.— ¹ / ₄ -28x2"
91805	Screw—Cap, Hex. Hd.— ⁷ / ₁₆ -20x1"
91807	Screw—Machine, Rd. Hd.— ¹ / ₄ -20x ³ / ₄ "
91808	Lockwasher— ⁷ / ₁₆ - ⁵ / ₃₂ x ¹ / ₈ "
91810	Elbow—Muffler
91811	Locknut—Muffler Elbow
91833	Stud—Dust Cover

Before ordering parts, read instructions top page 4

MASTER PART NUMBER	NAME
92067	Nut—Wing
92129	Nut—Hex.— $\frac{1}{4}$ -28
92285	Pin—Cotter—No. 18x $\frac{1}{4}$ "
92287	Screw—Machine, Rd. Hd.—10-32x $\frac{1}{4}$ "
92290	Lockwasher—No. 10x $\frac{1}{8}$ x $\frac{3}{4}$ "
92305	Washer—Control Lever ($\frac{1}{8}$ " Thick)
92306	Screw—Cap, Hex. Hd.— $\frac{1}{4}$ -20x $\frac{5}{8}$ "
	Note: {No. 90802 Screw—Cap, Hex. Hd.— $\frac{1}{4}$ -20x1 $\frac{1}{2}$ " }No. 92278 Nut—Hex.— $\frac{1}{4}$ -20 Used to mount control lever to lever base on type Nos. 20459, 20772.
92324	Rivet—Tubular— $\frac{1}{8}$ x $\frac{1}{2}$ "
92604	Screw—Connecting Rod
	Note: No. 91849 Screw—Connecting Rod (Has round head with slot) Used on earlier model engines.
92634	Screw—Machine, Rd. Hd.—5-40x $\frac{5}{8}$ "
99023	Cleaner Assembly—Air
99098	Wire—Choke Control—11- $\frac{3}{4}$ " Long
	Note: If longer wire is needed specify length in inches; if a shorter wire is needed order No. 99098 and cut to required length.
99099	Pipe—Fuel 5" Long
	Note: For other lengths specify: No. 29826 Pipe—Fuel 25 $\frac{1}{2}$ " Long No. 29858 Pipe—Fuel 21" Long No. 29919 Pipe—Fuel 18" Long No. 64409 Pipe—Fuel 23" Long No. 69358 Pipe—Fuel 30" Long No. 69404 Pipe—Fuel 16" Long No. 99128 Pipe—Fuel 3 $\frac{1}{4}$ " Long
99106	Elbow—Air Cleaner
99291	Breather

MASTER PART NUMBER	NAME
99349	Clutch Assembly—Starter
	Note: No. 29741 Clutch Assembly—Starter Used on type Nos. 20453, 20456, 20480. No. 29853 Clutch Assembly—Starter Used on type Nos. 20492, 20780, 20782, 20787, 95053. No. 99226 Clutch Assembly—Starter Used on type No. 20979.
99588	Lever Assembly—Throttle
99630	Cleaner—Air
99632	Teeth Assembly—Spring
99640	Rod Assembly—Connecting
	Note: No. 99084 Rod Assembly—Connecting Used on engines before Serial No. 196741.
99739	Base—Engine
99874	Adjuster—Speed
99955	Pump Assembly—Oil
290413	Cap—Oil Filler
290548	Breather Assembly
290568	Lever Assembly—Control (Stamped Steel)
	Note: No. 65589 Lever Assembly—Control (Cast Iron) Used on type Nos. 20459, 20772.
290584	Base—Control Lever (Stamped Steel)
	Note: No. 65631 Base—Control Lever (Cast Iron) Used on type Nos. 20459, 20772.
290642	Lever—Control
290792	Plate—Magneto
	Note: No. 290869 Plate—Magneto Used on type Nos. 95124, 95205.
290918	Lever—Control
290980	Pin Assembly—Piston—Standard
290981	Pin Assembly—Piston—.005" O.S.
291220	Screen—Blower Housing
291414	Bracket—Fuel Tank

Before ordering parts, read instructions top page 4